



STOVAX | **GAZCO**
Fire Your Imagination

New Products Preview 2017

electric



MK Technika Grzewcza i Klimatyzacja

45-368 Opole, ul. Ozimska 53
tel. 77 453-14-14, 77 402-14-70, 77 402-14-71
fax 77 402-14-70, 77 402-14-71
e-mail: biuro@mk.net.pl
www.mk.net.pl

Greater Skope for flame visuals and styling

The brand new Skope electric fire range offers a whole new flame-effect with a variety of fuel beds, powerful mood lighting and a host of furniture installation options.



Comprising four inset and two multi-sided models, the Skope electric range presents homeowners with a wealth of options.

FEATURE FUEL EFFECTS

Skope fires come complete with a range of different fuel effects which can be easily interchanged to create the desired look, or even mixed and matched for a bespoke display.

For a more authentic aesthetic, the realistically detailed logs can be positioned on a bed of grey and clear pebble effects for the appearance of a glowing, popping ember bed.

For those looking for an ultra-contemporary centrepiece, the Crystal Ice fuel effect is made up of a bed of small glass-effect crystals upon which larger ones can be arranged.

All fuel effect elements can be combined to create any combination, and when lit with the Skope's Chromalight triple lighting systems (detailed overleaf) offer almost endless possibilities.

COMPLETE CREATIVE CONTROL

All models in the Skope range include an elegant thermostatic handset that gives full control over the fire's host of features. Both heat output and Chromalight can be operated independently to create the desired atmosphere.



Experience the **Skope**
at www.gazco.com/skope 

Skope 110W 3 Sided, Trento surround with Crystal Ice fuel effect



Log fuel effect



Crystal Ice fuel effect

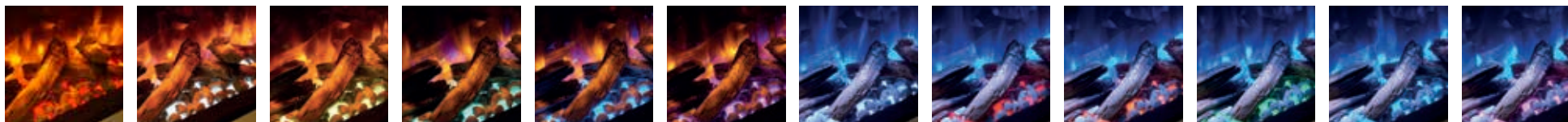


CHROMALIGHT® FLAME AND LIGHTING EFFECTS

Combining triple LED systems with a deep fuel bed, the innovative Skope range elevates electric fire technology to whole new levels. Flames appear to rise between the fuel effects, thanks to a reflective lining which mirrors the fire's fuel-effect behind the flame picture. Using the three part Chromalight Immersive LED System, the bright flames come to life, and can be selected in four variations including amber,

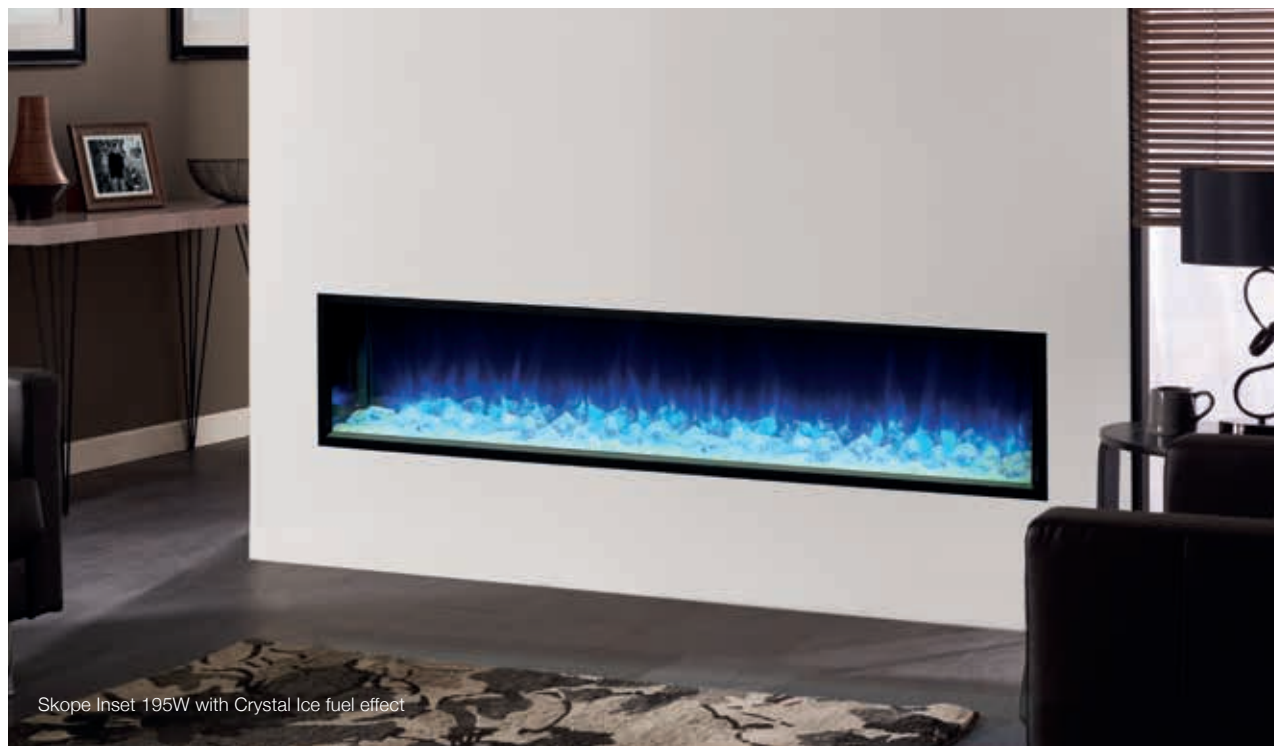
amber accented with blue, blue, and blue accented with amber depending on preference. Dynamic variation in flame height is achieved across each effect thanks to the fire's innovative projection system that creates an almost random, living visual. Augmented by overhead LEDs, fuel effects are bathed in either amber or white light to complement the selected flame colour.

Gazco's Chromalight system also includes fuel-bed LED up-lighting, which can be set to 12 vibrant colours that combine with the flame-effect for a truly mesmerising display. Shining through the fuel-effects, the LED lights create a rippling, varied glow that can be either set to a single colour or to gradually cycle through each.



KEY DETAILS

- Heat output 1-2kW
- Chromalight Immersive LED System
- Four different flame colours: Amber, Amber Blue Accent, Blue, Blue Amber Accent
- Flames and up-lighting can be enjoyed without the heat
- Inset models available in four sizes
- Multi-sided models available in two sizes with variety of styling options (see overleaf)
- Choice of fuel effects that can be mixed and matched including: Logs, Grey and Clear Pebbles and Crystal Ice glass-effect
- Thermostatic Remote Control



Skope Inset 195W with Crystal Ice fuel effect

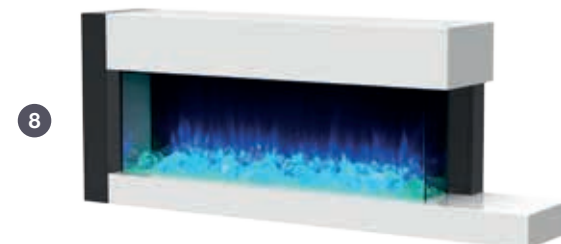
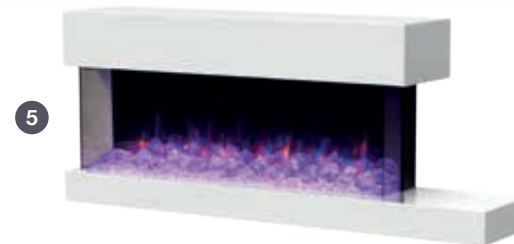


STYLISH NEW TRENTO SURROUND FOR SKOPE MULTI-SIDED MODELS

Both 70 and 110 multi-sided models can be installed with the Skope's contemporary Trento surround, housing the fire for minimal installation work. Customers can choose from either central, left or right configurations, which can be further enhanced with contrasting black satin corner columns and end-pieces if desired.

TRENTO CONFIGURATION OPTIONS

- 1 - Three sided central fire
- 2 - Three sided central fire with columns
- 3 - Two sided right corner
- 4 - Two sided right corner with column
- 5 - Two sided left corner
- 6 - Two sided left corner with column
- 7 - Two sided off centre with column and end piece
- 8 - Two sided off centre with column and end piece





Visuals enhanced for Electric Studio and Riva2

New eye-catching fuel bed and a depth-enhancing display create mesmerising flame effects for these stylish inset electric fire ranges.



Available for late 2017, Studio and Riva2 inset electric fires have been redesigned to feature all-new deeper displays with stunning fuel-effects and up-lighting.

Each model will come complete with the Fire Crystal fuel effect, a combination of amber, red and midnight-blue beads that create a sparkling and varied bed when lit from beneath with the LED up-lighting. Alternatively, customers can upgrade to the Fire Stone fuel bed made up of white and clear stones which glow a bright amber-gold when illuminated.

Adding to the display, a mirror-effect partition reflects the fuel-effects behind the flame picture, giving the impression of an even deeper fire.

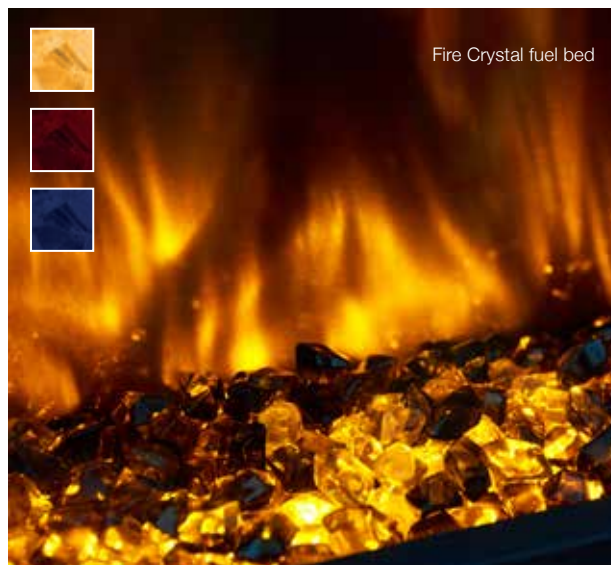
Studio and Riva2 inset electric fires are supplied with a remote control, which allows homeowners to easily adjust the heat, LED flame effect and variable brightness levels as well as operating the display without the heat if desired.



Riva2 Electric Inset 70 with Fire Crystal fuel bed

KEY DETAILS

- Heat output 1-2kW
- Choice of fuel effects
- Flames and fuel bed up-lighting can be enjoyed without the heat
- Studio Inset models: 80, 105 and 150
- Riva2 Inset models: 55 and 70
- Riva2 70 can be installed with Gazco's range of stone mantels
- Remote control as standard



Fire Crystal fuel bed



Fire Stone fuel bed

Contact your Area Representative now to find out more.

Your Area Representative will be pleased to give you further
information about all Gazco and Stovax products.

Stovax UK Trade Sales

Tel: 01392 474000 **Fax:** 01392 219932 **E-mail:** sales@stovax.com

Stovax Republic of Ireland Trade Sales

Tel: 00 44 1392 261990 **Fax:** 00 44 1392 261974 **E-mail:** exportsales@stovax.com

www.stovax.com

Gazco UK Trade Sales

Tel: 01392 261900 **Fax:** 01392 444148 **E-mail:** sales@gazco.com

Gazco Republic of Ireland Trade Sales

Tel: 00 44 1392 261990 **Fax:** 00 44 1392 261974 **E-mail:** exportsales@gazco.com

www.gazco.com

STOVAX | **GAZCO**
Fire Your Imagination

E & O E. IMPORTANT NOTICE: Please note this is a trade brochure highlighting new products for the 2017 heating season for Stovax and Gazco's authorised stockists and certain details may change prior to final specification of products. Please note that the installations shown within this brochure may not conform to British or Irish building regulations.



MK Technika Grzewcza i Klimatyzacja

45-368 Opole, ul. Ozimska 53
tel. 77 453-14-14, 77 402-14-70, 77 402-14-71
fax 77 402-14-70, 77 402-14-71
e-mail: biuro@mk.net.pl
www.mk.net.pl